

第十期社區聯絡小組通訊
Community Liaison Group
Newsletter Issue No. 10

2025年07月 – Jul 2025



堅尼地城前摩星嶺平房區公營房屋發展之工地平整及基礎設施工程

Site Formation and Infrastructure Works for Public Housing Development at Ex-Mount Davis Cottage Area in Kennedy Town

歡迎參閱堅尼地城前摩星嶺平房區公營房屋發展之工地平整及基礎設施工程（合約編號：SD/2022/01）的第十期通訊。本通訊以季刊形式旨在提供是項工程的進度及相關工程資訊。

Welcome to the 10th issue of the Newsletter for Site Formation and Infrastructure Works for Public Housing Development at Ex-Mount Davis Cottage Area in Kennedy Town (Contract No.: SD/2022/01). This Newsletter provides you with the construction progress and other relevant information about the project on a quarterly basis.

工程簡介 Project Information

為配合堅尼地城的公營房屋發展，我們現正於前摩星嶺平房區進行工地平整工程，以及相關的基礎設施工程。

To facilitate the public housing development in Kennedy Town, we carry out site formation works and associated infrastructure works at Ex-Mount Davis Cottage Area.

工程動工日期：2022年10月31日 Contract Commencement Date: 31 October 2022
預計完工日期：2026年底 Anticipated Completion Date: End 2026

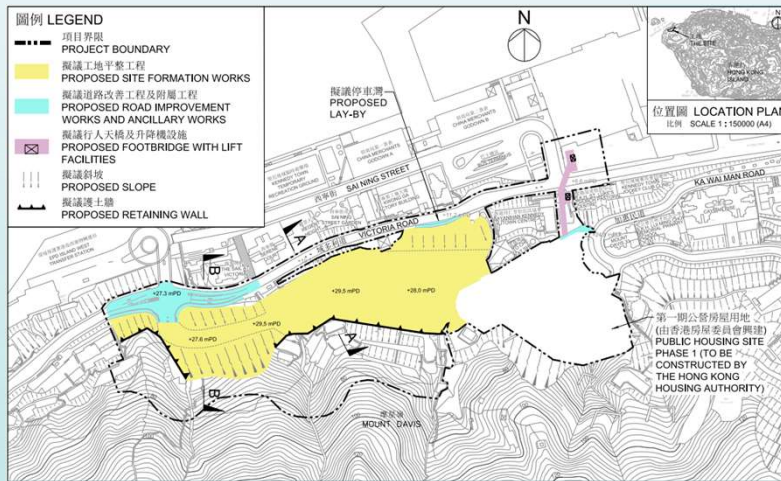


土木工程拓展署
Civil Engineering and
Development Department



中國路橋工程有限責任公司
CHINA ROAD AND BRIDGE CORPORATION

工程範圍 Scope of Works



項目主要工程範圍包括：

- 進行工地平整和建造相關的護土牆和斜坡；
- 建造一條橫跨域多利道的行人天橋和升降機設施，以及相關行人路；
- 在域多利道建造停車灣和進行相關道路改善工程；
- 進行其他相關附屬工程，包括排水、排污、供水及環境美化工程。

The main scope of works includes:

- Site formation works and construction of associated retaining walls and slopes;
- Construction of a footbridge with lift facilities across Victoria Road, and associated footpath;
- Construction of a lay-by at Victoria Road and associated road improvement works;
- Ancillary works including drainage, sewerage, waterworks and landscaping works.

工程進度 Project Progress

正開展中的工程包括：

Works in progress include:



擋土牆混凝土結構工程
Concreting Works for Retaining Wall



渠務工程
Drainage Construction Works

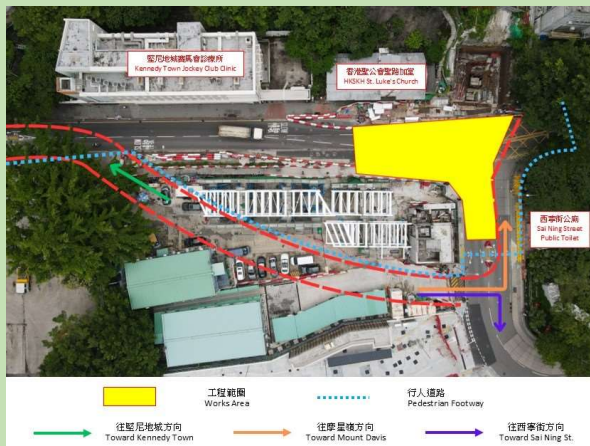


斜坡建造工程
Slope Formation Works



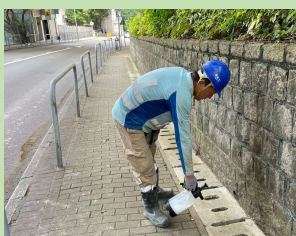
行人天橋組裝工程
Footbridge Segments Assembly Works

臨時交通措施 Temporary Traffic Arrangement



- 為配合行人天橋吊運工程，沿域多利道(賽馬會診所外)至西寧街公廁交界路段，暫定於2025年第四季の其中兩個晚上凌晨一點至五點半實施單線雙程行車改道安排。工程期間將提供至少4米寬的行車路及2米寬的行人路供公眾臨時使用；
- 屆時將會設置適當的指示牌指導駕駛人士及行人，以減低工程對附近持份者的影響。
- To facilitate the footbridge erection works, a temporary one-lane-two-way traffic diversion will be implemented at the junction of Victoria Road (outside the Jockey Club Clinic) and Sai Ning Street public toilet on two separate nights in 2025 Q4, from 1:00 a.m. to 5:30 a.m.. A temporary single carriageway will be provided with at least 4-meter wide, and the temporary pedestrian crossings will be provided with at least 2-meter wide for public use ;
- Appropriate signs will be erected to guide motorists and pedestrians to minimise the impact on nearby stakeholders.

紓減環境影響措施 Environmental Mitigation Measures



噴灑蚊油
Applying Larvicide



清理排水設施
Clearing the Existing
Drainage Facilities

- 於工地周邊定期進行巡查及滅蚊工作，以減低蚊患滋生；
- 清理排水設施，避免渠道淤塞造成氾濫。
- Prevention of mosquitoes breeding by carrying out regular inspections and mosquito control work;
- Prevention of flooding by clearing drainage facilities.

未來三個月展開的工程 Construction Works in the Coming Three Months

在未來三個月，我們將繼續進行打樁工程、斜坡加固工程、擋土牆建造工程、階梯型渠道建造工程及行人天橋工程，包括建造升降機塔。

In the coming three months, we will continue with piling works, slope upgrading works, the construction of retaining walls, the construction of cascade channels, and the construction of lift towers for the footbridge.

社區聯絡工作 Community Liaison Works



為對鄰近社區表達關懷，土木工程拓展署及其工程團隊代表在端午節前夕與鄰近持份者慶祝端午節，並送上果籃以示祝福。

To express care for the nearby community, CEDD and their site representatives celebrated Dragon Boat Festival with nearby stakeholders on the eve of the festival. We also presented fruit baskets as a gesture of blessing.

工程小知識 Construction Trivia 探地雷達探測 Ground Probing Radar



- 探地雷達探測（Ground Probing Radar）系統是一種無損檢測技術，利用雷達脈衝波探測地下管線，並可透過陣列式雷達獲取更精確的地下影像。
- 探地雷達測試系統，它提供一種安全、快速、無損害的檢測方法，不需開挖，不造成破壞。
- Ground Probing Radar (GPR) system is a non-destructive testing technology that utilises radar pulses to detect underground utilities and can achieve more precise underground imaging through array radar systems.
- The GPR system provides a safe, fast, and non-destructive detection method. It does not require excavation and causes no damage, making it an efficient tool for underground investigations.

資訊與聯絡 Information & Enquiries

如對位於加惠民道的第一期公營房屋工程項目有任何疑問或意見，可透過以下方法聯絡相關部門：

Should you have any enquiries or comments on Public Housing project Phase 1 at Ka Wai Man Road, please contact the Housing Department via the following:

- 房屋署熱線 / Housing Department Hotline ☎ : 9090 7713

如對本工程項目有任何疑問或意見，可透過以下方法聯絡我們：

Should you have any enquiries or comments on the project, please contact us via the following:

- 24小時熱線 / 24-hour Hotline ☎ : 9129 1080